

DREAMLAND
M A R G A T E

DREAMLAND

M A R G A T E

THE SCENIC STAGE VENUE INFORMATION



Venue Address:

49 Marine Terrace, Margate, Kent CT9 1XJ

Load In Address/details:

Via Dreamland Carpark (entrance in Belgrave road), then enter the site via the event space gate in the top left hand corner. **NOTE: We will require full vehicle details in advance (48hrs)**

Key Contacts:

Estate Electrical and Production Manager:

Andrew Gall, Email: andrew.gall@drewamland.co.uk Mobile: 07778157569

Senior Programming Manager: TBC

Venue Manager: TBC

PLEASE READ IN CONJUNCTION WITH PDF/DWG DRAWING PACK

Venue Information

The Dreamland Scenic Stage is located on the central food court adjacent to the Grade II listed 100-year-old Scenic Railway Wooden Roller Coaster, the Scenic Stage is a permanent outdoor Dessa dome stage giving Dreamland the ability to hold outdoor festival style shows.

Capacities

STANDING MUSIC: 5000 (not inc. production kill)

We have hosted various events inc. live music, theatre type performances, film screenings, football screenings. The space can be set up for seated events (this is an additional cost as we have no seating in house)

We have a qty. of large mobile umbrellas to provide shade on hot days but these can limit sight lines of the screen.

Technical Specification

STAGE

The Scenic Stage is a permanent outdoor structure comprising of a Dessa roof built on a Layher scaffold stage. The stage, cowsheds & backstage areas are covered by standard roof sheets. There is no apron or roof canopy/overhang structure therefore the downstage edge of the performance area is open to the elements. The backstage area is enclosed. The rear sheets are run in upright Cader beams and will be lowered in event of high winds (see attached wind management policy).

The stage decks have a point loading of 5 kN per M² which must be strictly adhered to

There are Layher Towers DSL and DSR which currently hold the fascia panels and cannot be used as PA towers.

The structure has a false proscenium/fascia which is decorated as per the photo on page 1. The fascia has built in DMX LED pixels **NOTE:** the system is currently awaiting a full strip and service as 30% of the pixels are faulty. We have a PC running Chamsys Magic Q which gives some basic control of these.

The stage is approx. 19m w x 8m d (60' w x 26'd) with a 4m (13') build area on the crossover with 2.8m cowsheds on both SL and SR. Stage is permanently set at 1m (~3ft) high. See attached DWGs and PDFs

Please note that due to the location of the Scenic Stage, it is subject to a Wind management plan being implemented which may involve evacuating the stage.

The Dessa system has specific weight loadings and rigging points (see attached PDF) – any requirements for additional rigging/loadings (scenic, LX and or PA) must be discussed and requested prior to the event so an allowance for a house rigger can be made.]

The PA is flown in 2 positions and 4 no. house LX/AV trusses on 1T motors complete the house system (see attached Plots/Plans)

FOH – a wooden shed can be used or small gazebo type structure – **NOTE;** no crowd control barrier available in house for this structure. There is a 400mm deep duct from DSL to our usual FOH position.

PA SPEC

Please note there are some options on the PA which must be discussed in advance to guarantee the equipment is allocated correctly as Microphones, Peripherals & Monitors etc. are shared with other Dreamland venues.

Loudspeakers: **D & B, Y series flown SL and SR on 2 no. 1/2T CM D8+ Lodestars (top hung)**
 6 no. D & B GB Y8 and 2 no. D & B GB Y12 per side
 8 no. D & B GB Y Sub (Under stage)
 4 no. D & B Y10P PS front fills (on D/S edge)

Monitor Speakers: 10 no. D & B GB M2 Monitors (Shared with HBTS venue).
 4 no. D & B GB M4 Monitors (Shared with HBTS Venue)

Amps & Control: 3 no. D & B GB D80 Amplifier (for the main PA)
 1 no. D & B GB DS10 Audio network bridge (for the main PA)
 1 no. D & B D12 for front fills
 1 no. D & B D20 for M4 monitors
 3 no. D & B GB D80 Amplifier (for the M2 monitors)
 1 no. D & B GB DS10 Audio network bridge (for the M2 Monitors)

Side Fills: 2 no. D & B E9's rigged onstage (SL & SR) + E-PAC Amp

Drum Sub: 1 no. D & B C4 Sub + P1200 and sub card

FOH Console: 1 no. Midas M32s p - suitable for smaller shows and can also be run from SL cowshed position to avoid the use of FOH structure.

 1 no. Avid D-Show Venue 48 CH system comprising of; side wing, FOH and Stage Rack

Monitor Console: 1 no. Yamaha PM5D-RH (mons can run from Midas M32 for smaller shows as mentioned above)

Multicore: 1 no. 48-way XLR I/P Panel with 3-way splits (FOH/MONS/record or Broadcast)
 Qty 8-way return and 8-way XLRM and XLRFM panel patches.
 4-Way BNC – BNC loom (run in to FOH position)
 Fan outs & Cable Pack to suit

Microphones:

Make	Model	Qty	Make	Model	Qty
Sennheiser	E604 (Tom)	6	Audix	D2 (Tom)	2
	E901 (Kick In)	2		D4 (Floor Tom)	1
	E902 (Kick Out)	2		D6 (Kick)	1
	E904 (Tom)	8		i5 (Snare)	1
	E906 (Gtr)	2			
	E914 (Overhead)	2	Shure	Beta 52 (Kick)	3
	E835 (Vocal)	6		Beta 57 (Inst)	9
				SM57 (Inst)	12
Beyer Dynamic	MC930 (Overhead)	2		SM58 (Vocal)	9
	MC950 (Condenser)	1			
	TGD70 (Kick)	1			
	TGD58 (Clip On)	3			
	TGD57 (Clip On)	2			

Peripherals: 24 K&M Boom Stands
12 K&M Short Boom Stands
24 BSS AR133 DI Boxes

LIGHTING

The scenic stage consists of 3 Thomas 500mm x 500mm trusses and a 4th Prolyte 300mm x x400mm truss (main Screen hang). The main trusses are hung on 2 no. CM D8+ 1T motors per truss, the 4th Truss (LED Wall) is Hung 4 no. GIS D8+ 1T motors. **NOTE;** The Thomas trusses are rigged slightly off centre dues to pick up pints, however luminaires are hung centrally to the stage.

Lighting is pre rigged as per attached LX plot. Additional touring kit can added, subject to weight loadings etc. please discuss requirements in advance, additional crew may be required for rigging. House rig must be re-instated post show.

2 lighting control positions available; FOH or SR adjacent to LX distro and Artnet node/splitters.

Control/distro: 1 no. Chamsys MQ200 desk
1 no. Prolights Artnet node
1 no. Prolights DMX splitter assigned to universe 4 from node for rear truss and side pixel bars
1 no. Prolights DMX splitter assigned to universe 5 from node for incoming touring shows and associated equipment

Hot Power Distro rack Socapex and parallel fed 16a outlets (fed from 125A TPN supply)

Ethercon run from Artnet node to FOH position and to SR desk position (adjacent to distro)

3 way DMX multi from FOH to SR as back up

No.1 truss has 1 no. soca with 16A breakouts and 1 DMX line from SR Artnet node, fixtures assigned to universe 1 on node

No.2 truss has 2 no. soca with 16A breakouts and 2 DMX lines (1 spare) from SR Artnet node, fixtures assigned to universe 2 on node

No.3 truss has 2 no. soca with 16A breakouts and 2 DMX lines (1 spare) from SR Artnet node, fixtures assigned to universe 3 on node

No.4 truss (Screen truss) has 1 no. 16A hot power supply and 1 DMX line assigned to universe 4 on node

Venue Fixture List: Pre rigged as per attached plot.
8 x Prolights Jet Spot 4Z LED Spot
3 x Prolights Panorama IP LED Spot
8 x Prolights Diamond19 LED Wash
22 x Prolights Studio Cob Plus FC LED PAR
8 x Prolights Pixelbars rigged 4 per side on roof arches as cross lights or audience blinders on a C/L of approx. 2.4M from stage level

Floor Package: 2 no. Prolights Pixelbars
4 no. ClayPaky Sharpys

A/V

- Screen:** 8m x 4.5m (16:9) unbranded LED screen on the US No.4 truss.
3.9mm pitch, 1080p, 2048 x 1152
limited qty of spares available now. Currently awaiting updated spares package
- Control/VM:** 1 no. Novastar VX6S screen controller
1 no. Roland Vision Mixer. Weight 1350kg
- Content control:** The screen is networked to the parks CMS (Triple Play)
- Playback:** 2 no. Macbook pro for content streaming, PPT etc. (no VT playback software is currently available)

POWER

All terminating on interlocked Commando S/O, please ensure all touring production equipment is appropriately inspected (PAT) and in good, safe working order. S/Os below highlighted in Bold are for powering in house production kit

SL:

- 1 x 63A TPN (A/V)**
- 1 x 32A TPN (Sound)**
- 1 x 32A SPN (FOH Sound)**
- 12 x 16A SPN (**2 in use for fascia LX, 1 for BOH lighting**)

SR:

- 1 x 125A TPN (LX)**
- 1 x 63A TN
- 1 x 32A TPN (**Motor Power**)
- 6 x 16A SPN (**1 used for fascia LX**)

US:

- 1 x 63A TPN
- 2 x 16A SPN

At FOH run in from DSL:

- 1 x 32A Single Phase
- 1 x 32A Three Phase

Adjacent to the scenic stage is our main LV intake room, there is the possibility for larger supplies up to 400A TPN, however this will require prior discussions and planning.

Various Rubber box distro and cabling available inc. back power strips/breakouts etc.

RIGGING

Please discuss any rigging requirements in advance

Motors/control: 1 no. 8 way Kinesys control with remote positioned SR. Motor control cabling semi permanently installed for CM motor control
1 no. 4 way generic motor controller for No. 4 truss (LED Wall)

Rigging tackle: Limited qty of slings, shackles, 1/2T chain blocks are available

Access equipment: 1 no. 10 rung Zargees available.
1 no. Genie Z135 available for use upon request

SFX

Please note that due to the proximity of the Scenic Railway there are restrictions and limitations for the use of certain SFX. Please discuss any specific requirements in advance including but not limited to Lasers, Cryogenics, Pyros, Smoke, Flame projectors, Sparks, Confetti etc.

Haze: 2 no. DMX hazers are installed SL/SR and patch to the Chamsys MQ20, qty of fluid available

MISC

Storage Dreamland has limited space for empties etc. however please discuss in advance so we can look at options alternatively empties to be stored back on truck/trailer

Risers

We have a good quantity of Steeldeck and Litedeck 8 x 4's, 8 x 2's (for a wheeled DJ riser) and several 4 x 4's available with 1' and 2' foot legs – please request these in advance so an allowance for the appropriate crew can be made. Custom cut legs maybe available with notice.

Followspots

No Followspots or structures are available, however please discuss requirements in advance/

Dressing Rooms / Production Offices

There are 4 dressing rooms located undercover. Each has 240V wall sockets, USB power sockets, temperature control (AC & heating), furniture, mirrors and various lighting modes. Dressing rooms can be interconnected. Please see site plan for configuration.

There is an en-suite wet room attached to Dressing Room 1 and a shared wet room for Dressing Rooms 3 – 5.

In addition, there are two small quick-change dressing rooms on the Scenic Stage itself

Load in

Please discuss load in requirements well in advance as there may be restrictions depending on timing if the park is open to other guests. The food court (in front of stage) and artificial grass area is load bearing and suitable for large vehicles.

We have one large ramp to load in from the food court to the front of stage (2 sections of crowd barrier needs to be removed) or ramped access USL corner.

Parking

There is limited parking available for coach parking (for approx. 2 x 45' coaches with trailers) in the undercover car park off All Saints Ave. If you require more parking space than this or a 3-phase power supply this can be arranged in the car park off Belgrave Rd (CT9 1XG) but will require a parking dispensation. Please send vehicle details well in advance.

Crew

We have a local crewing company who can provide various no.s of crew with varying skillsets. Please discuss in advance.

Noise Limits

All venue spaces are close to inhabited dwellings and so must adhere to local authority restrictions. **NOTE; we are currently reviewing our NMP with an external Acoustician, updates and plans will be distributed ASAP**

Airship / Balloons / Blimps/ Drones

Blimps and drones are allowed in the open-air spaces as long as applicable licences are held and sent in advance. Dreamland Margate may stipulate an additional dedicated Fire Marshall to oversee any activities regarding blimps at the event organiser's expense.

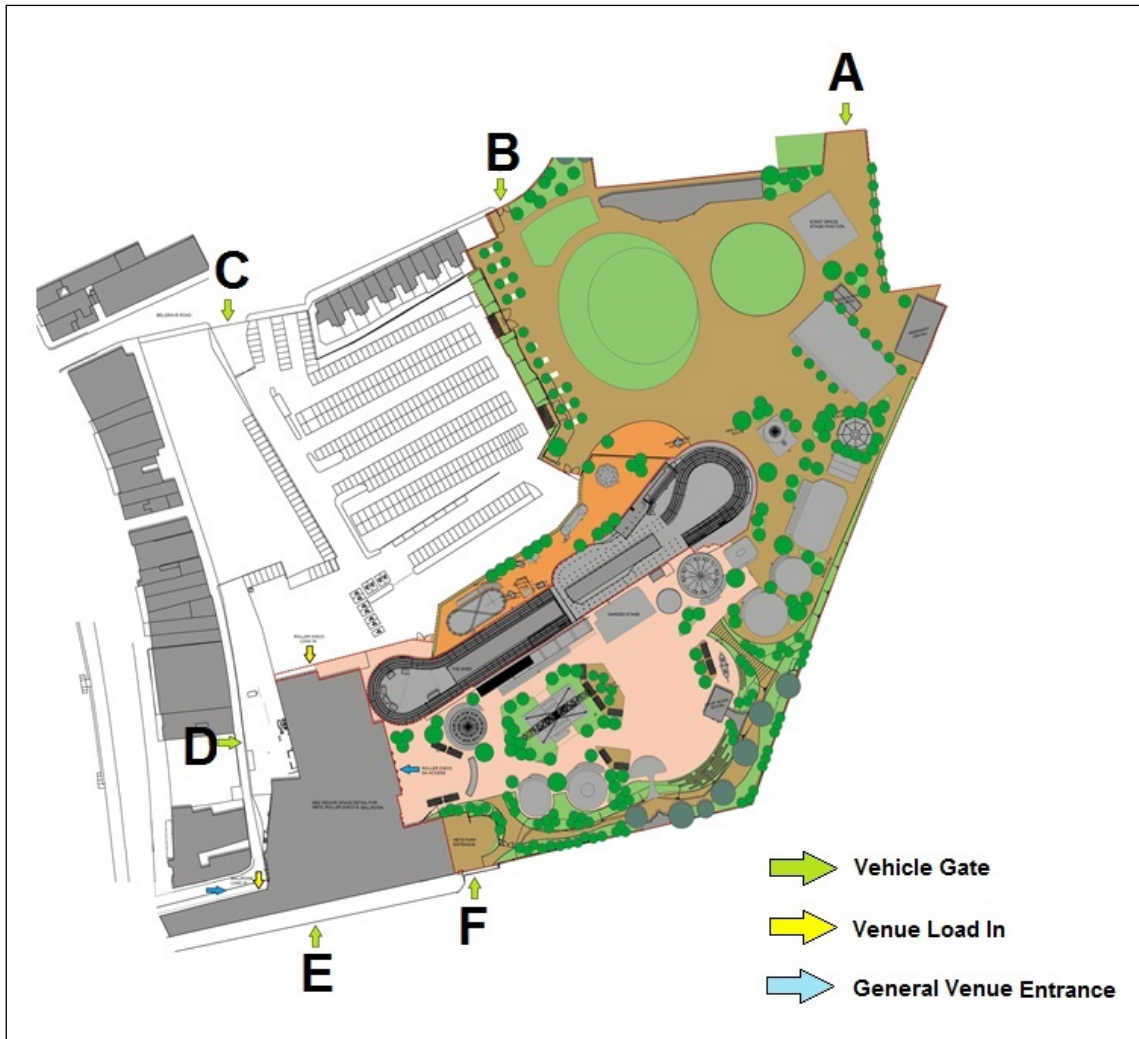
There is a 50m exclusion zone from the nearby train line.

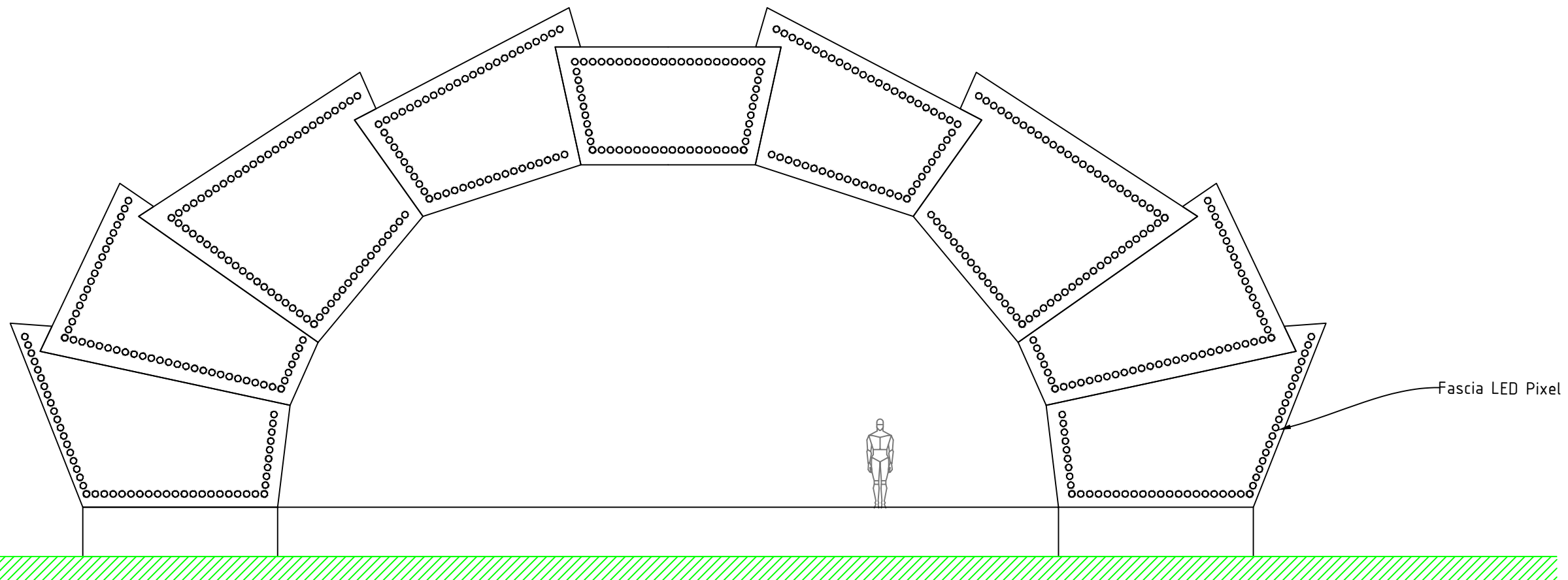
Overall Site Plan

Please see attached site plan

DREAMLAND

M A R G A T E





VENUE:
Dreamland Margate

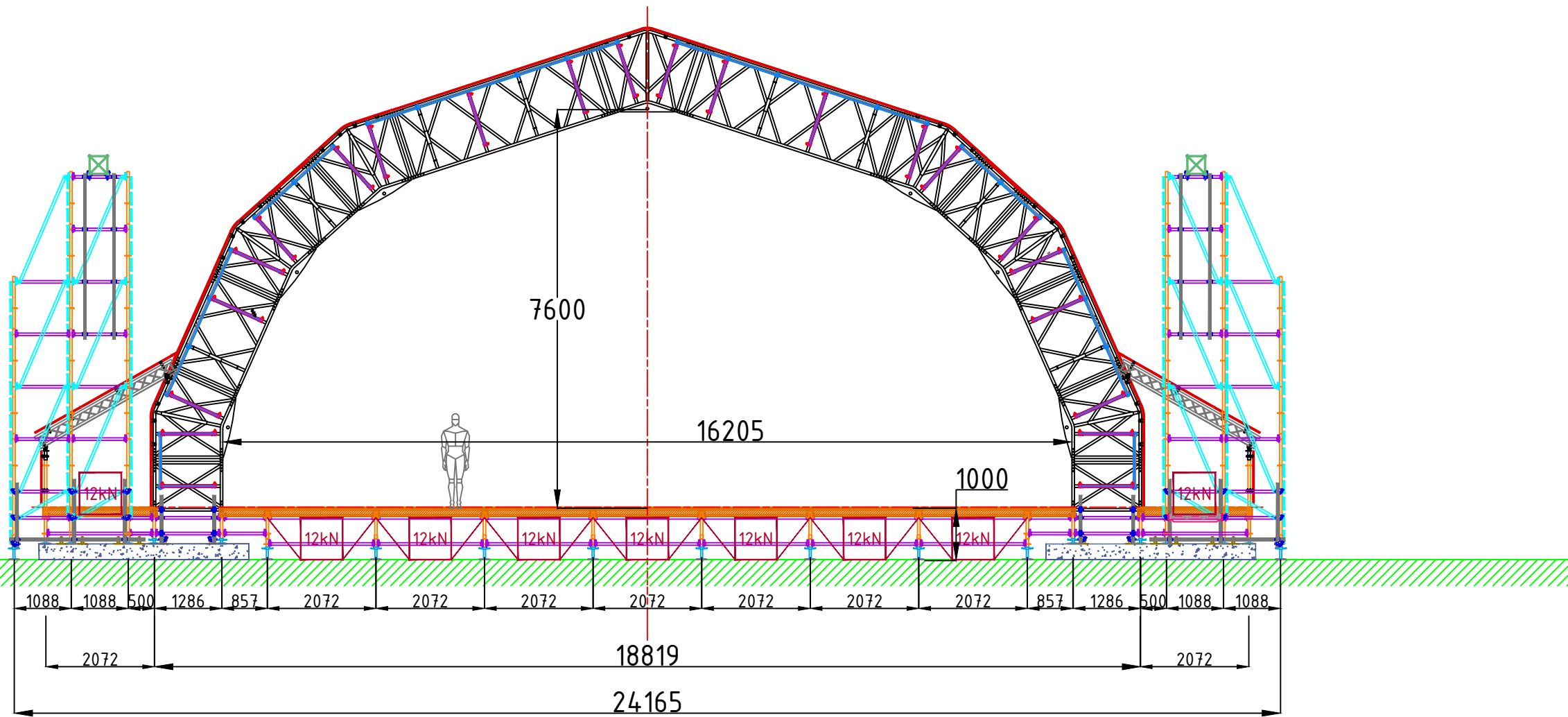
TITLE
Scenic Stage

Front Elevation
(Fascia Only)

Rev	Date	Details	Paper Size:	Drawn By:	Filename:	Version:	Ver Date:
			A3		DREAMLAND-Scenic Stage Master Drawing Pack 2021 rev 2	Rev. 2	22-06-21
			Scale:	Sheet Number:			
			1:100	-			

Sands Heritage Ltd 1/a Dreamland Margate
 49 Marine Tce, Margate, CT9 1XJ
 Tel: +44 (0)1843 267 027
 Email: nathan.hale@dreamland.co.uk





VENUE:
Dreamland Margate

TITLE
 Scenic Stage
 Elevation - No
 Fascia

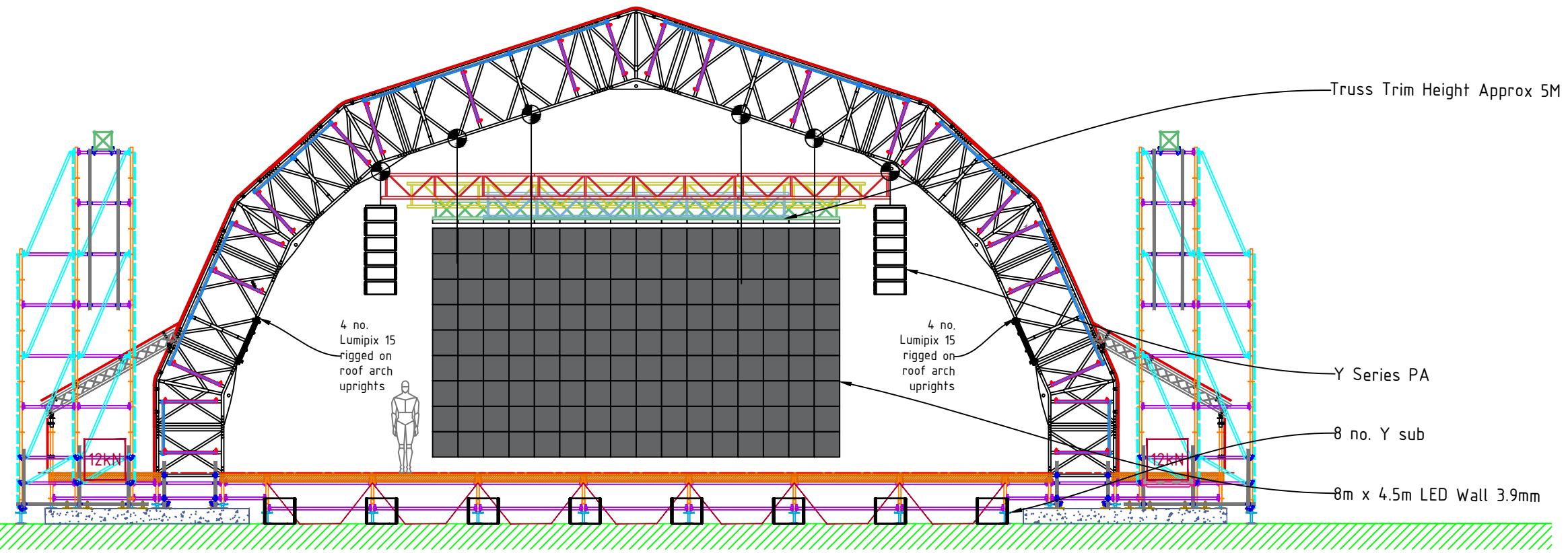
Rev	Date	Details

Paper Size:
A3
 Scale:
1:100

Drawn By:
 Sheet Number:
 -

Filename:
 DREAMLAND-Scenic Stage Master Drawing Pack
 2021 rev 2
 Version:
Rev. 2
 Ver Date:
22-06-21

Sands Heritage Ltd t/a Dreamland Margate
 49 Marine Tce, Margate, CT9 1XJ
 Tel: +44 (0)1843 267 027
 Email: nathan.hale@dreamland.co.uk



VENUE:
Dreamland Margate

TITLE
Scenic Stage
Elevation - rigging
etc. (No Fascia)

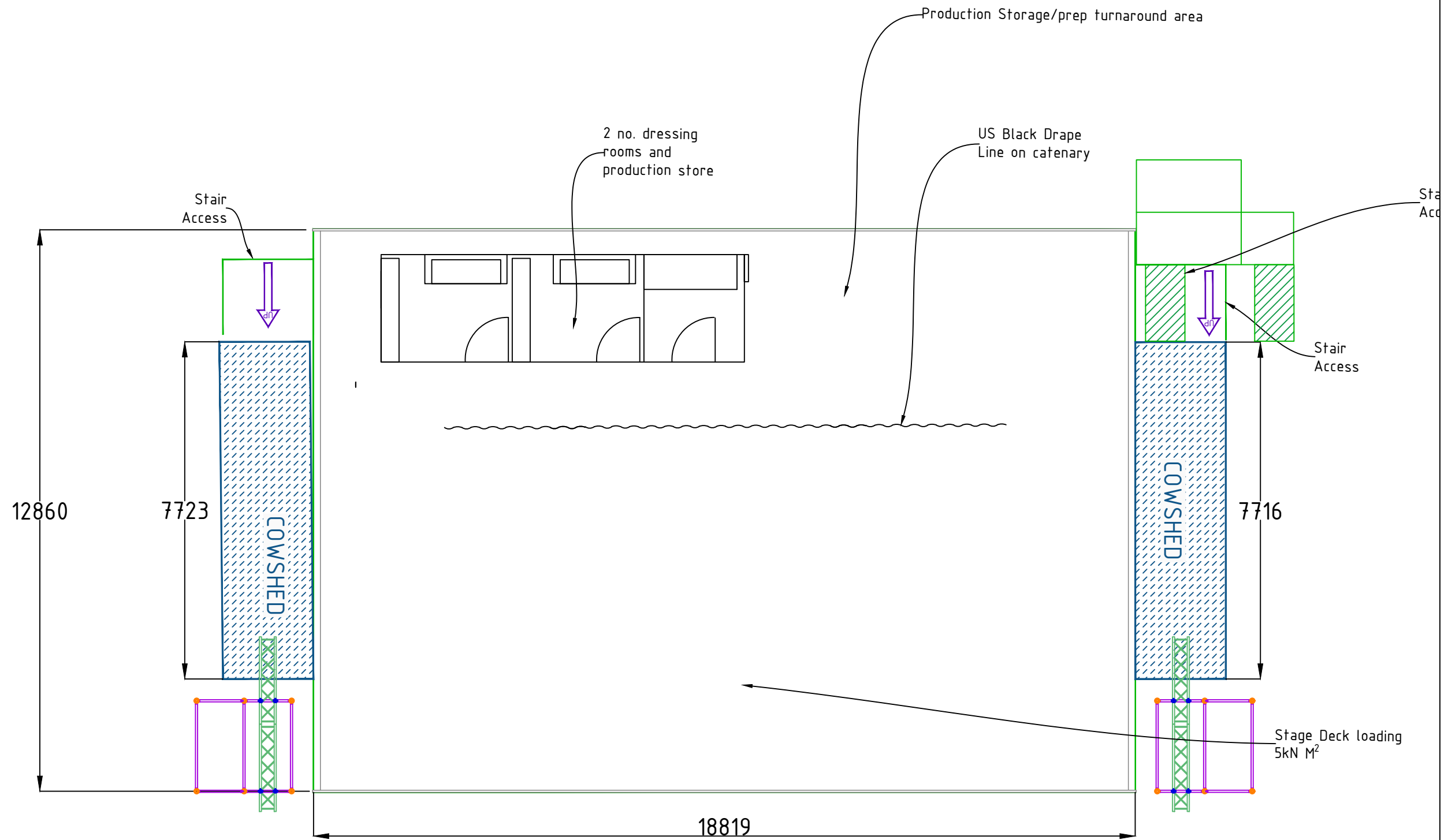
Rev	Date	Details

Paper Size:
A3
Scale:
1:100

Drawn By:
Sheet Number:
-

Filename:
DREAMLAND-Scenic Stage Master Drawing Pack
2021 rev 2
Version:
Rev. 2
Ver Date:
22-06-21

Sands Heritage Ltd t/a Dreamland Margate
49 Marine Tce, Margate, CT9 1XJ
Tel: +44 (0)1843 267 027
Email: nathan.hale@dreamland.co.uk



VENUE:
Dreamland Margate

TITLE
Scenic Stage
Stage Plan

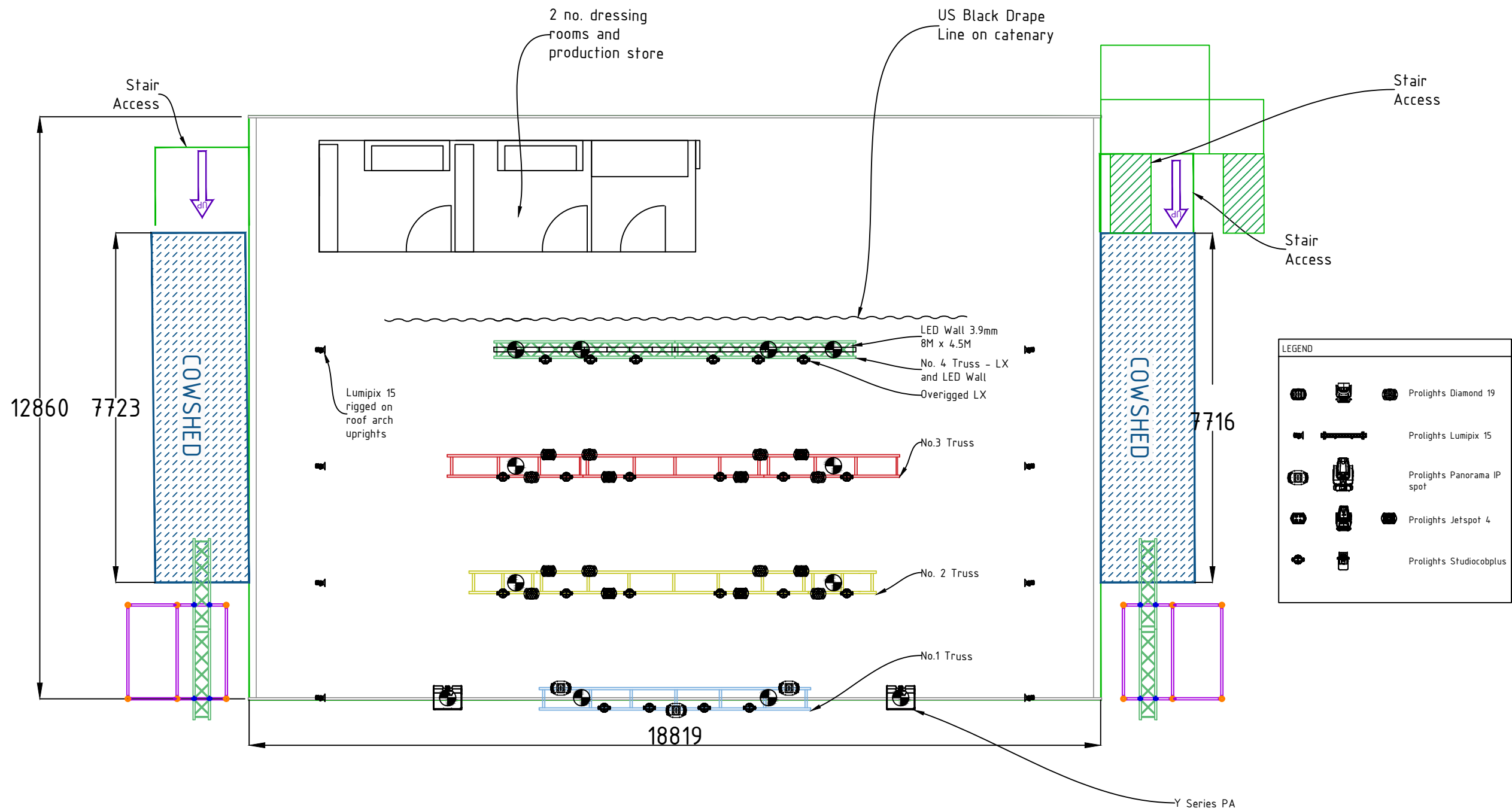
Rev	Date	Details

Paper Size:
A3
 Scale:
1:100

Drawn By:
 Sheet Number:
-

Filename:
 DREAMLAND-Scenic Stage Master Drawing Pack
 2021 rev 2
 Version:
Rev. 2
 Ver Date:
22-06-21

Sands Heritage Ltd t/a Dreamland Margate
 49 Marine Tce, Margate, CT9 1XJ
 Tel: +44 (0)1843 267 027
 Email: nathan.hale@dreamland.co.uk



VENUE:
Dreamland Margate

TITLE
Scenic Stage
LX etc.

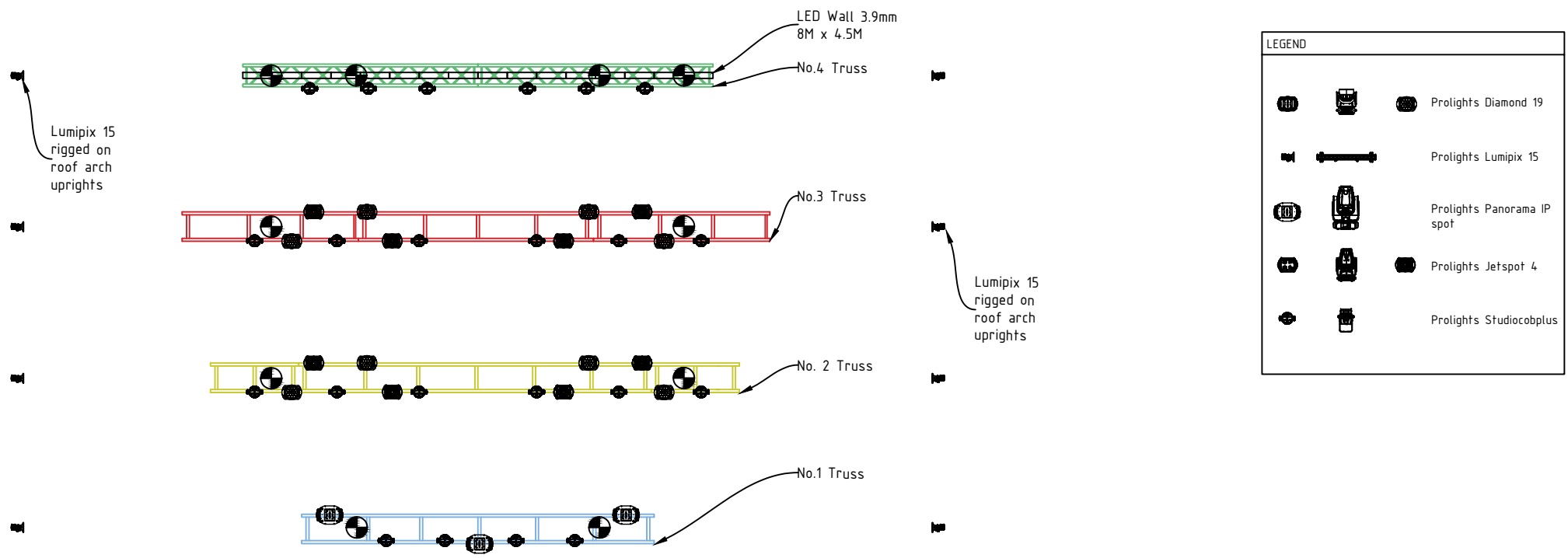
Rev	Date	Details

Paper Size:
A3
 Scale:
1:100

Drawn By:
 Sheet Number:
 -

Filename:
 DREAMLAND-Scenic Stage Master Drawing Pack
 2021 rev 2
 Version:
Rev. 2
 Ver Date:
22-06-21

Sands Heritage Ltd t/a Dreamland Margate
 49 Marine Tce, Margate, CT9 1XJ
 Tel: +44 (0)1843 267 027
 Email: nathan.hale@dreamland.co.uk



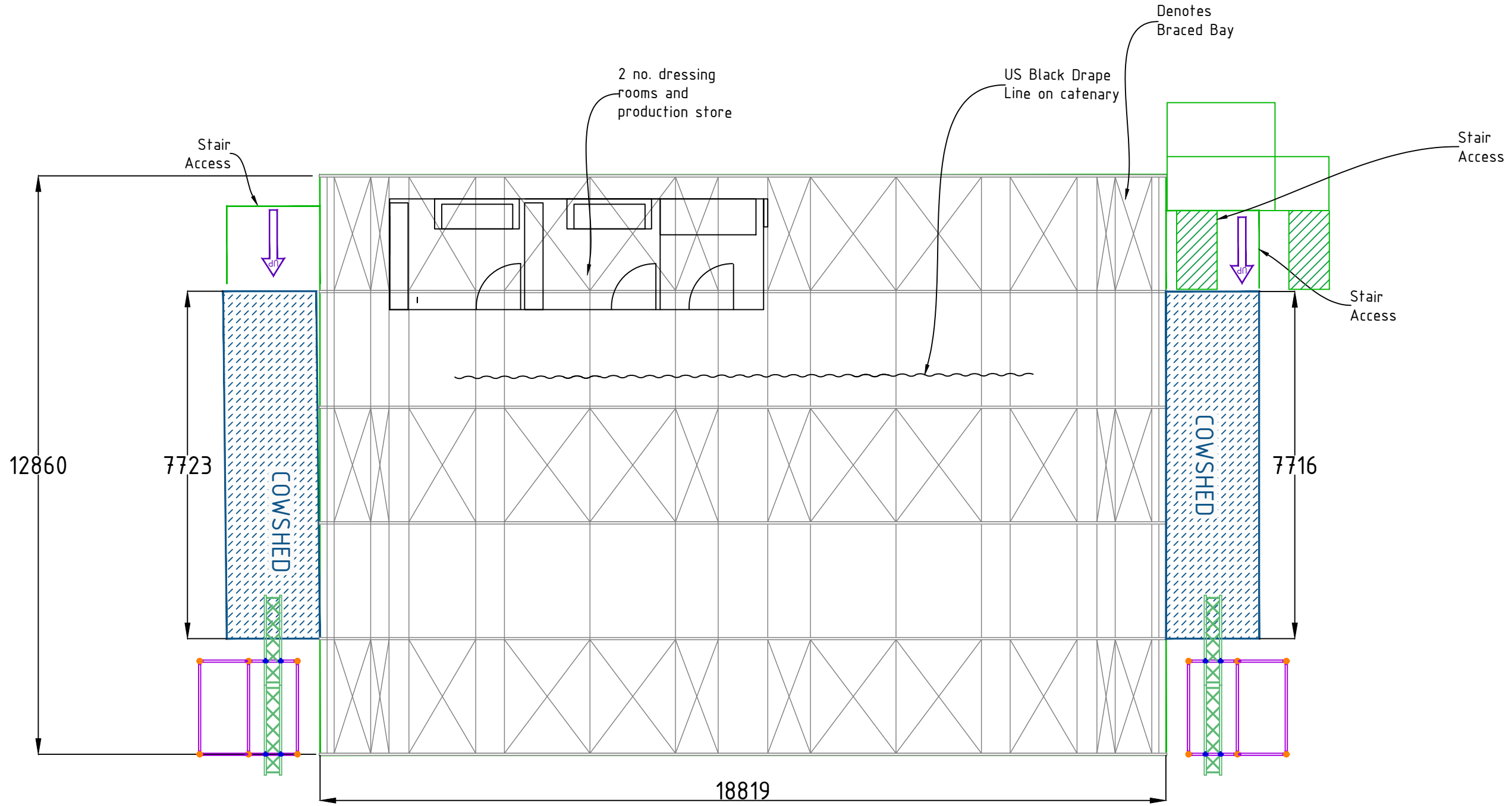
VENUE:
Dreamland Margate

TITLE
Scenic Stage
LX etc.

Rev	Date	Details

Paper Size: A3	Drawn By:	Filename: DREAMLAND-Scenic Stage Master Drawing Pack 2021 rev 2
Scale: 1:100	Sheet Number: -	Version: Rev. 2
		Ver Date: 22-06-21

Sands Heritage Ltd t/a Dreamland Margate
 49 Marine Tce, Margate, CT9 1XJ
 Tel: +44 (0)1843 267 027
 Email: nathan.hale@dreamland.co.uk



VENUE:
Dreamland Margate

TITLE
Scenic Stage
Stage Plan - Roof

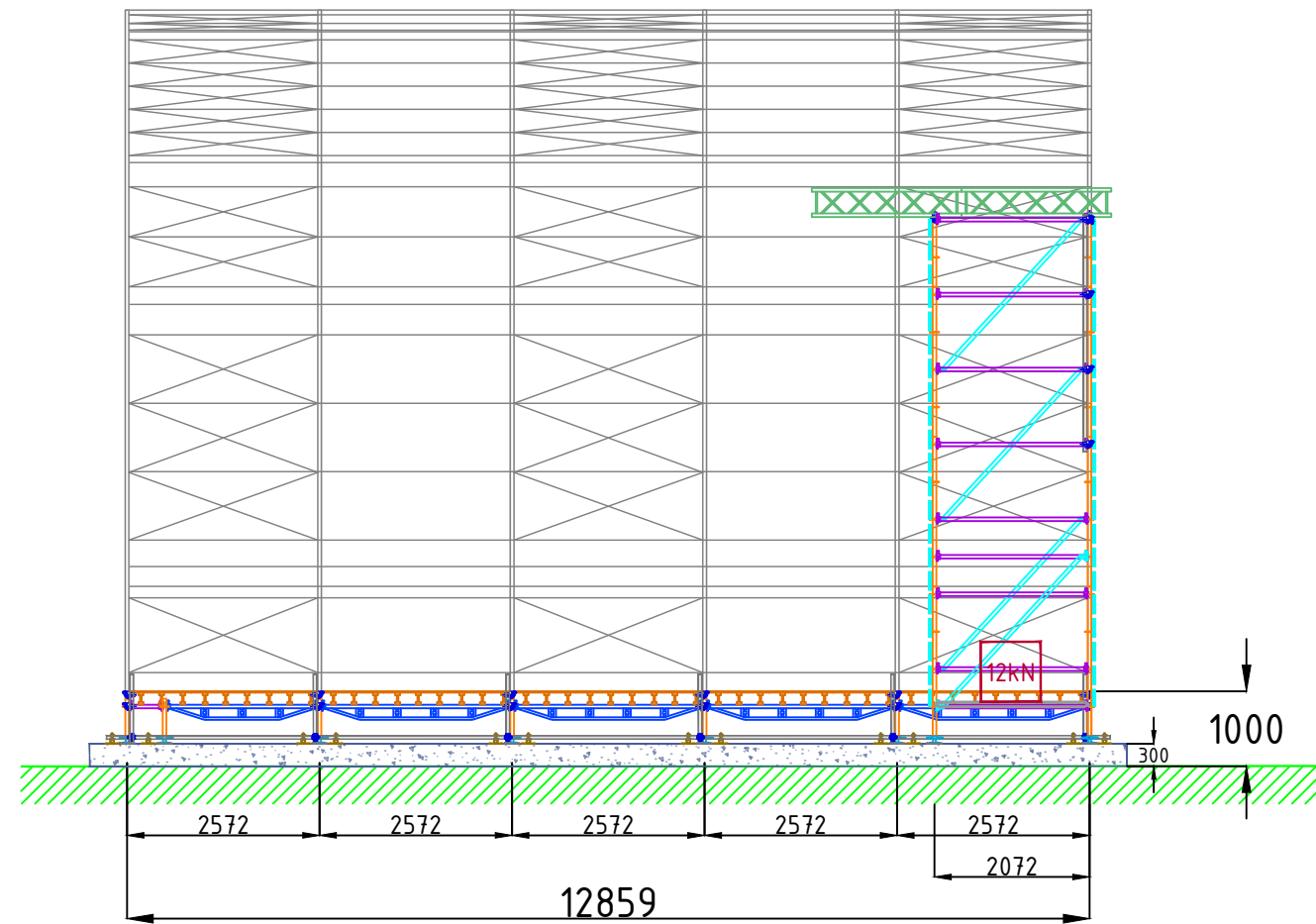
Rev	Date	Details

Paper Size:
A3
 Scale:
1:100

Drawn By:
 Sheet Number:
-

Filename:
 DREAMLAND-Scenic Stage Master Drawing Pack
 2021 rev 2
 Version:
Rev. 2
 Ver Date:
22-06-21

Sands Heritage Ltd t/a Dreamland Margate
 49 Marine Tce, Margate, CT9 1XJ
 Tel: +44 (0)1843 267 027
 Email: nathan.hate@dreamland.co.uk



VENUE:
Dreamland Margate

TITLE
Scenic Stage
Elevation - Side

Rev	Date	Details


Paper Size:
A3
 Scale:
1:100

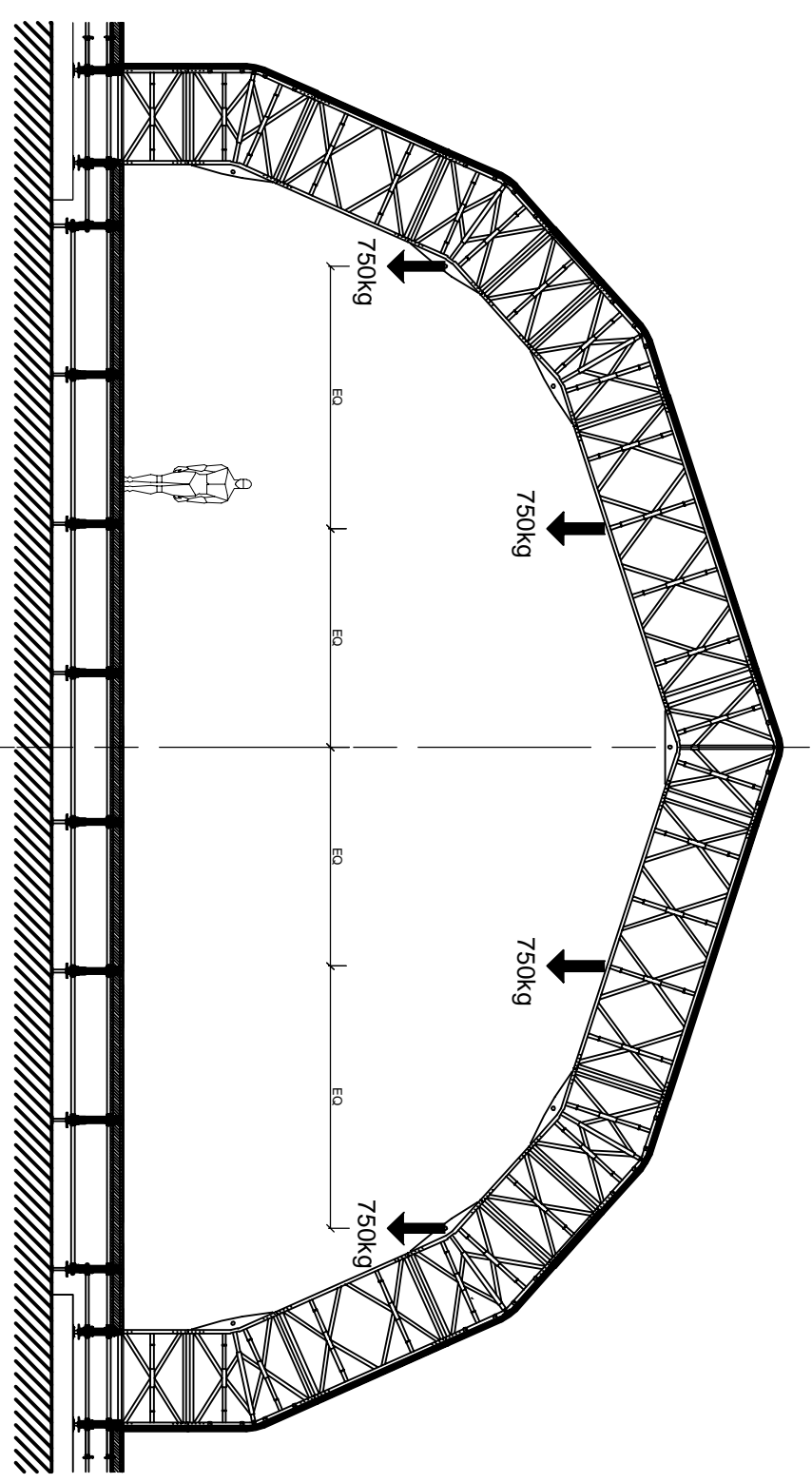
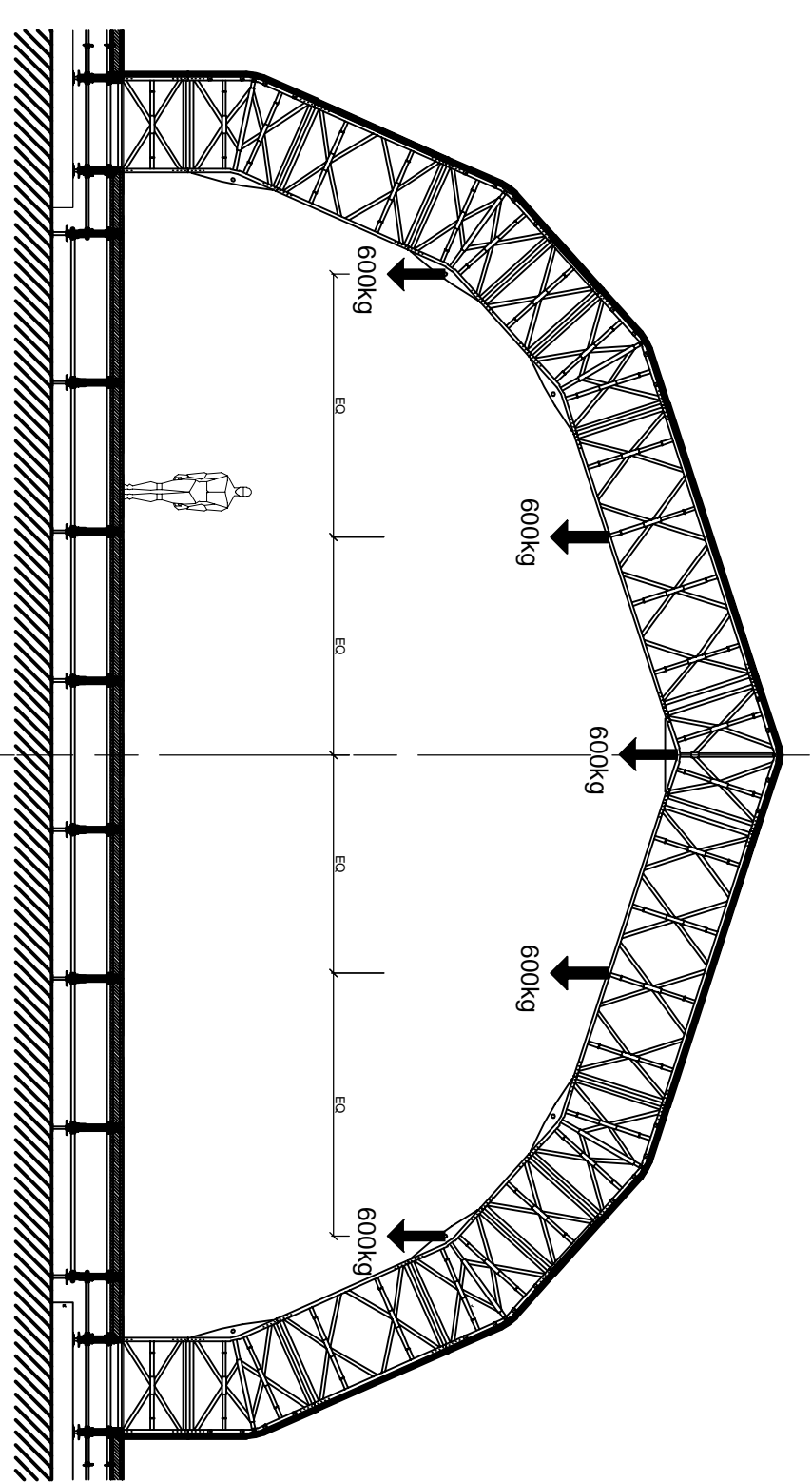
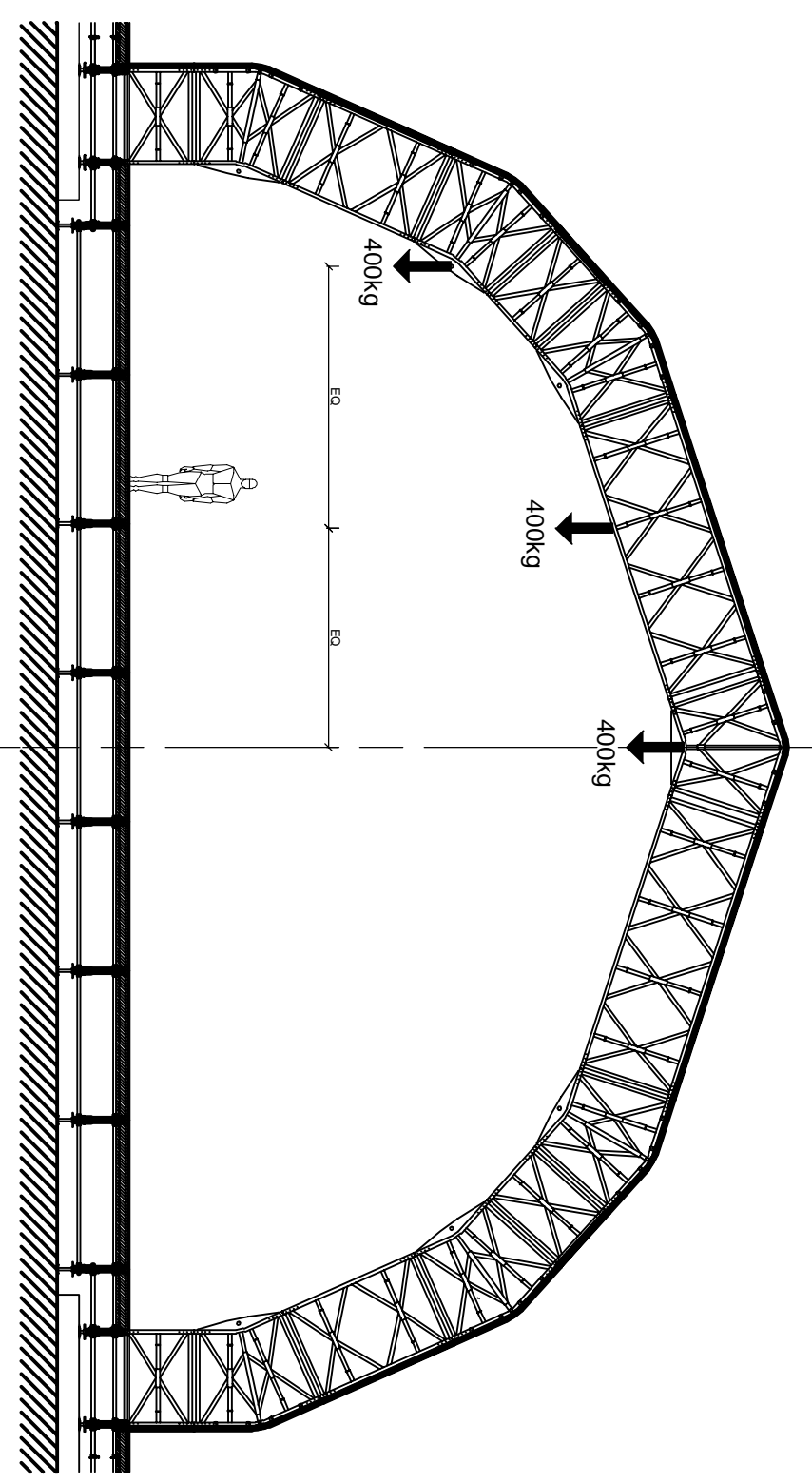
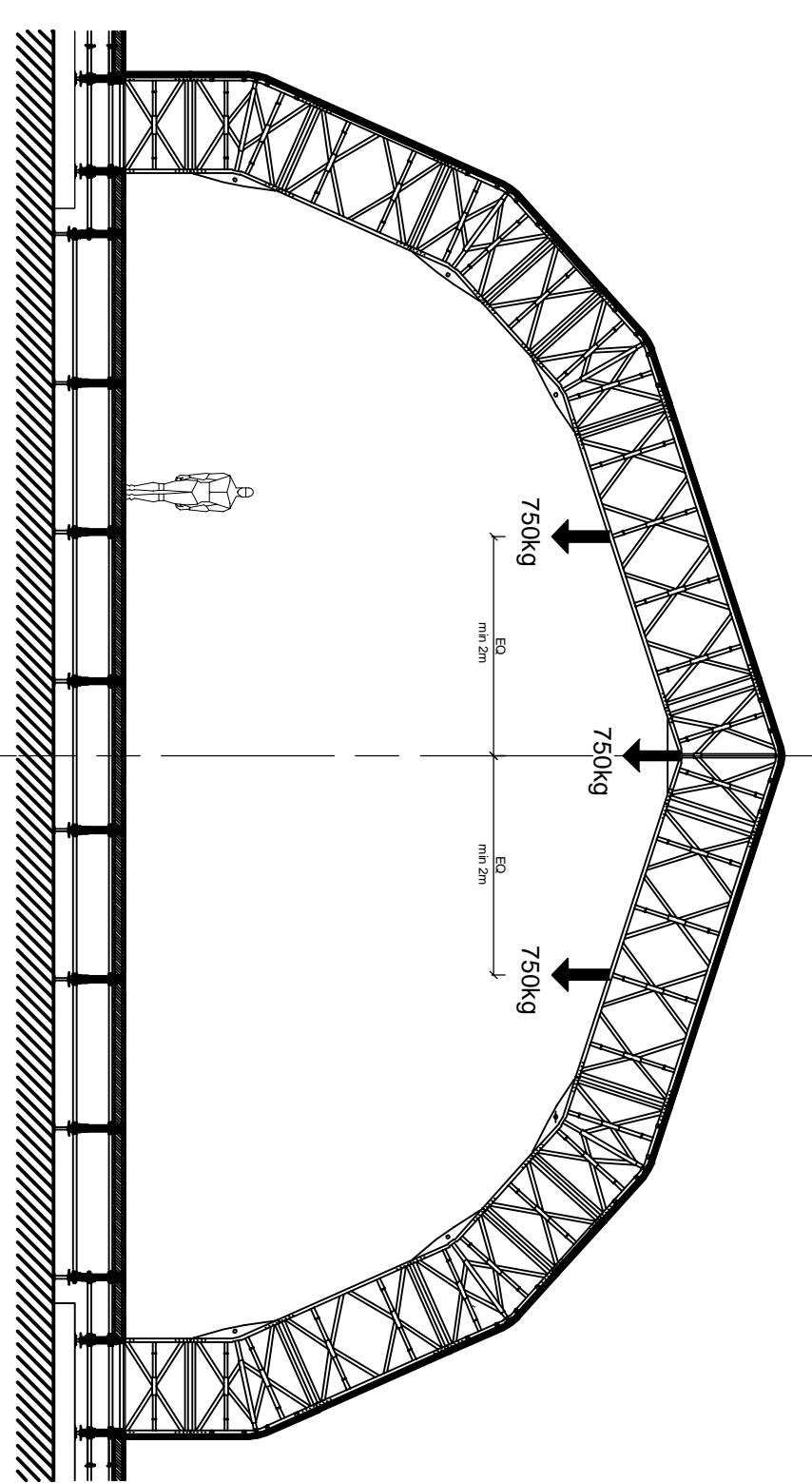
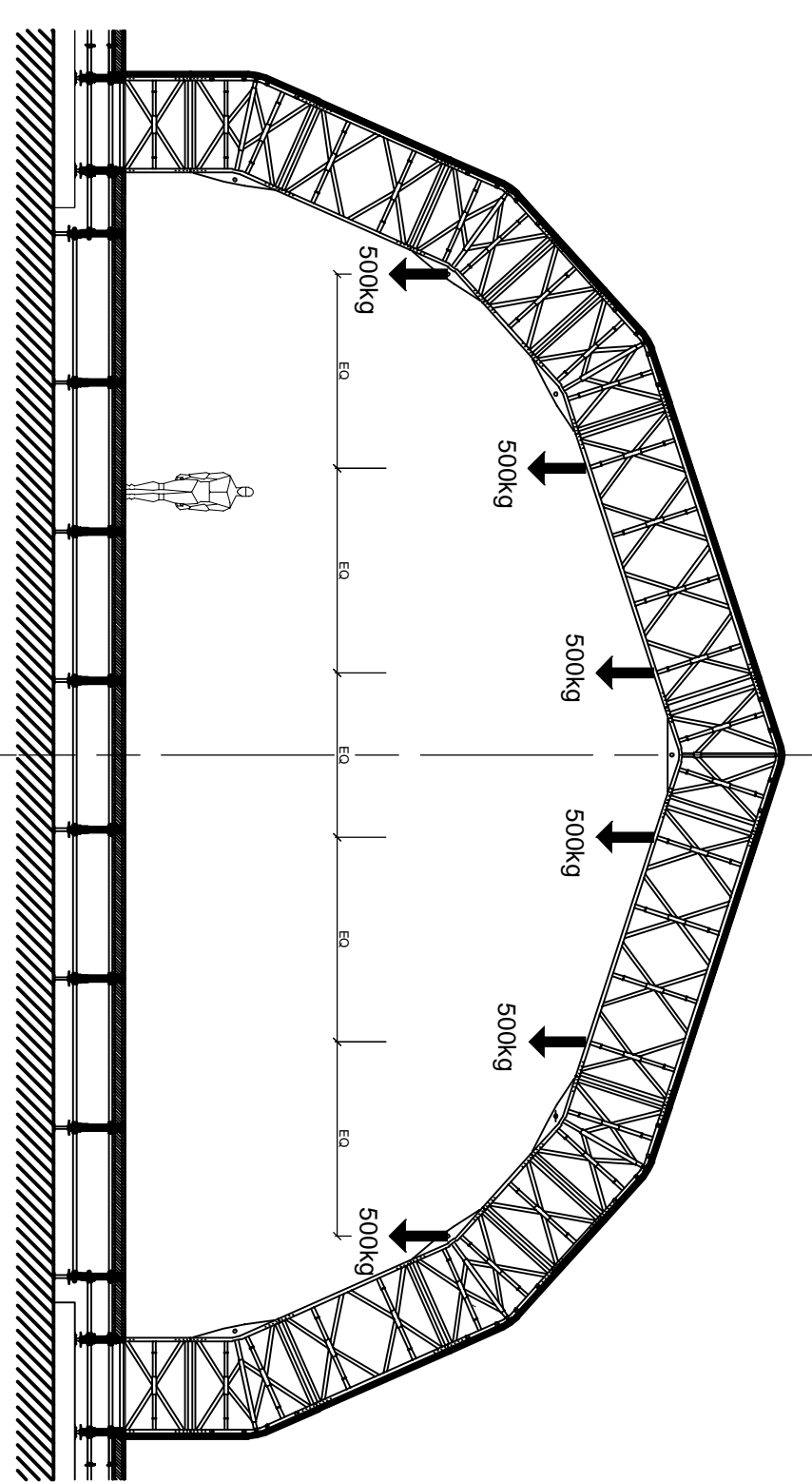
Drawn By:
 Sheet Number:
-

Filename:
 DREAMLAND-Scenic Stage Master Drawing Pack
 2021 rev 2
 Version:
Rev. 2
 Ver Date:
22-06-21

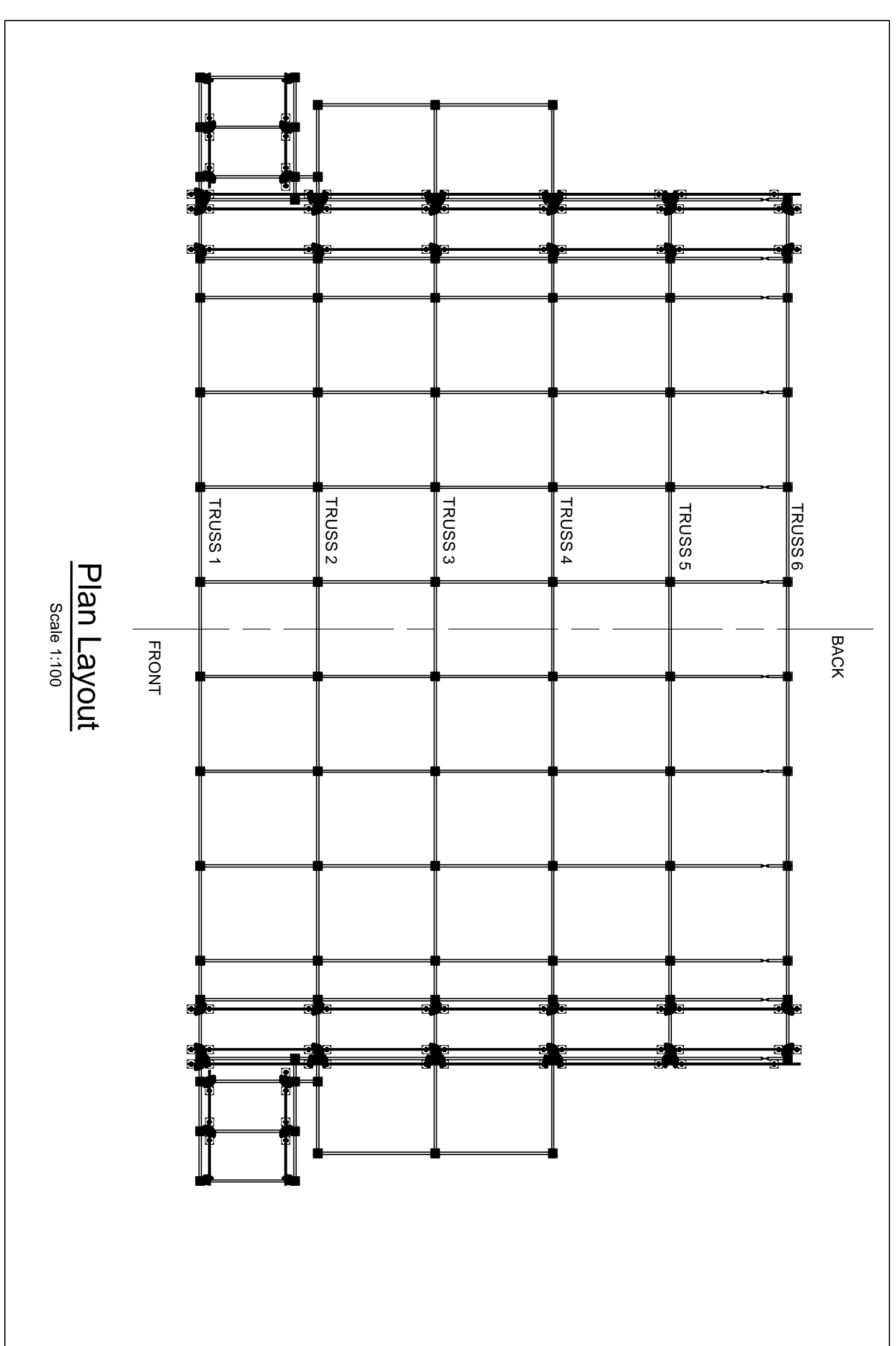
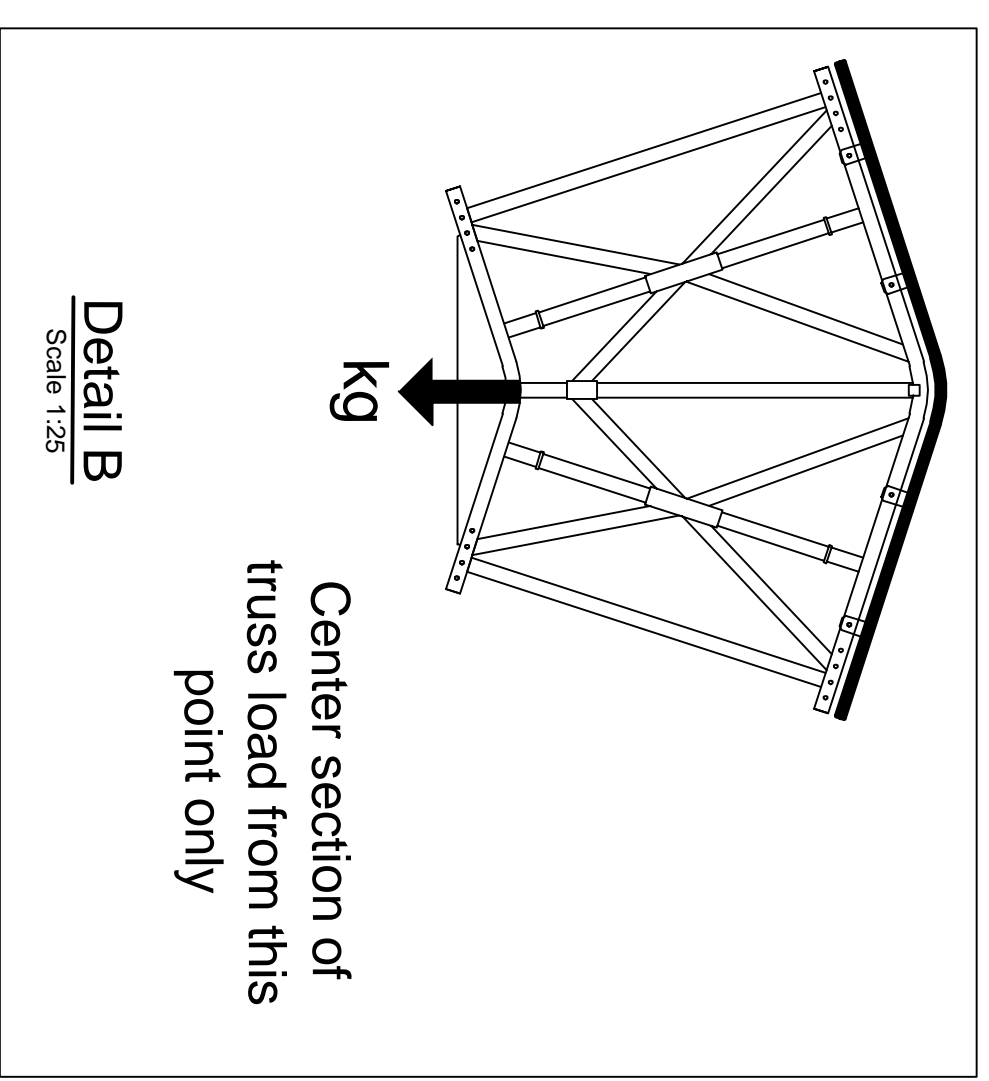
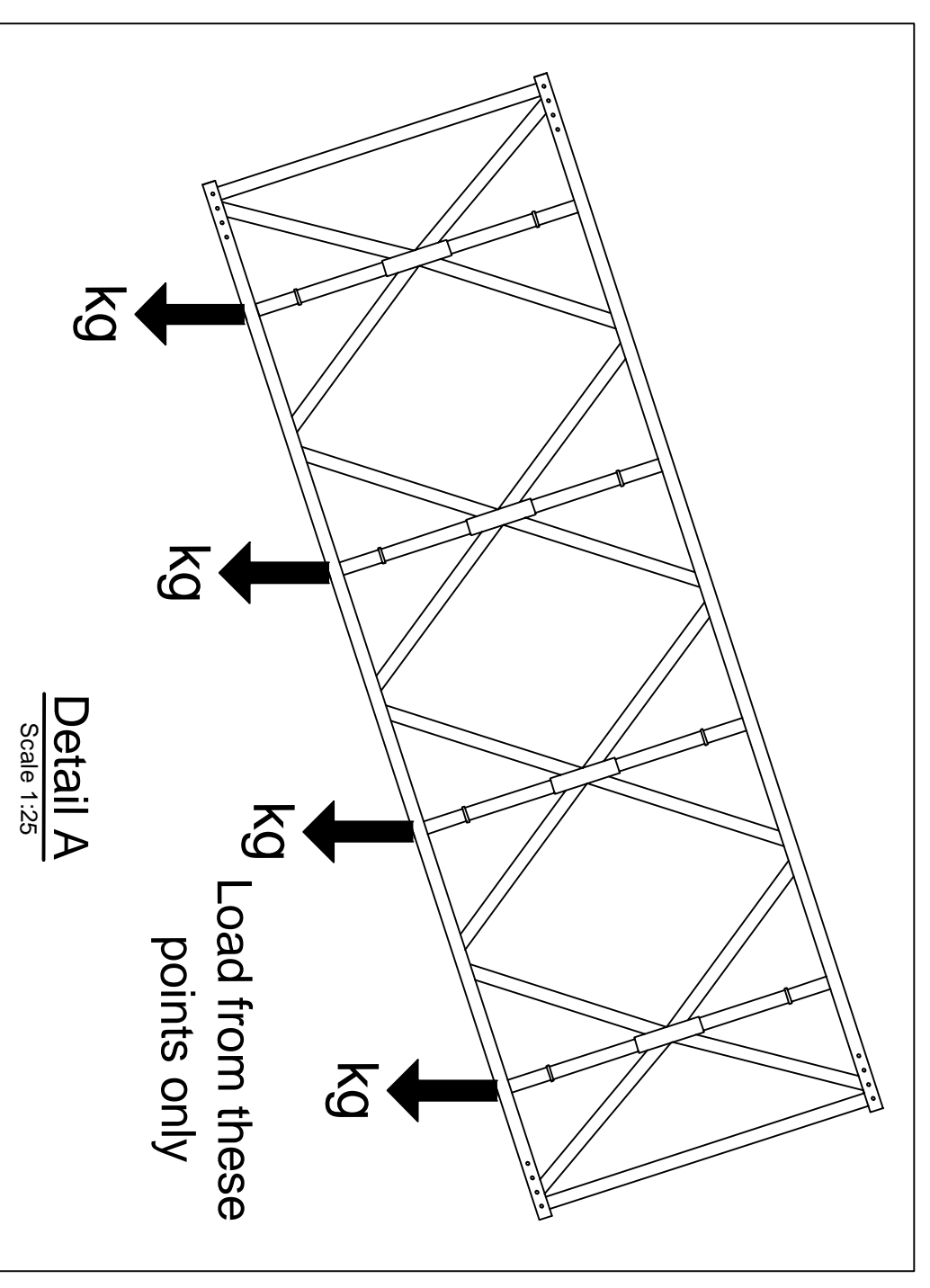
Sands Heritage Ltd t/a Dreamland Margate
 49 Marine Tce, Margate, CT9 1XJ
 Tel: +44 (0)1843 267 027
 Email: nathan.hale@dreamland.co.uk

NOTES

- 1 DO NOT SCALE THIS DRAWING. ON PRINT OR ELECTRONICALLY. WORK FROM FIGURED DIMENSIONS ONLY.
 - 2 No deviation from the details shown on this drawing is allowed without CampbellReith's prior permission in writing.
 - 3 Read this drawing with all Architects, Service Engineers and CampbellReith's Resident Design and Drawings.
 - 4 All work is to be in accordance with the relevant specifications issued by the client and the contract documents.
 - 5 DRAWING STATUS
 - P - PRELIMINARY** - Evolving drawings for approval, Tenders, Billings, etc.
 - C - CONSTRUCTION** - Fully developed drawings issued under reservation for construction.
 - ONLY STATUS C DRAWINGS TO BE USED FOR CONSTRUCTION.**
- 6 SUITABILITY CODE
WORK IN PROGRESS:
S0 - Work in progress
SHARED (NON-CONTRACTUAL):
S1 - For coordination, S2 - For information, S3 - For internal review and comment, S4 - For coordination approval
DOCUMENTATION FOR CONTRACTOR PURPOSES:
D1 - For costing, D2 - For Tender, D3 - For contractor design,
D4 - For manufacturer / processor approval
7  Denotes Drawing Number



LOADING OPTIONS PER TRUSS



Notes:

- All loads to be hung using fibre round slings.
- All load points shown hung from the bottom chord of the truss at vertical points. See Detail A and B
- The loads shown are total allowable vertical forces. All bridling between trusses must be with in this limit.
- The arrangements shown have no allowance for snow or excessive wind loadings. It is the responsibility of dreamland to determine if the full loads can be applied. Weather forecasts should be regularly monitored prior to and during events. These must be a procedure in place to reduce the applied loading on the roof, if snow occurs at any stage during the event.
- Max 3000kg per Truss.
- Max 750kg per load point.

Job Title	DREAMLAND, MARGATE		
Client	ACORN		
TRUSS LOADING RULES			
Drawn	Date	Scale @ A1	CI checked
ACG	JUL 18	1:100	TW
Dwg No.	10457-CRH-MA-ZZ-DR-1000		Sheet/ Substitution
			S0 P1

Issue For Information 13.07.18 / AC

Serial#	Description	Date	By

CampbellReith
consulting engineers

LONDON 020 7940 1700 MANCHESTER 0161 819 3066
 SURREY 01737 784 500 BIRMINGHAM 01875 467 484
 BRISTOL 0117 916 1066 DUBLIN 00 971 4345 708

www.campbellreith.com

Date	11/06/2018	 Prime Scaffold and Structural Designs Limited	 Acorn Event Structures
Client	Acorn Event structures		
Title	Dreamland Stage		
Site	Unknown		
Prepared By	D.Rogerson		
Checked by	M. Stirk		

Wind Management Policy

GENERAL

This wind management policy has been prepared in accordance with guidance given in IStructE publication, Temporary Demountable Structures Guidance on procurement Design and Use fourth Edition.

WIND LOADING

Site Specific wind loads in accordance with EN 1991-1-3 have been calculated for this project.

Project No. = 5777-1 - Dreamlands Dome & Stage

These Calculations also determine partial area loads the Layher scaffold and truss structure, these partial area loads are used for the purpose of structural verification. Partial area loads are a function of the peak velocity pressure (qp). To ensure calculated design loads are not exceeded it is necessary to monitor wind speeds on site. The following control data has been established for this project:

Peak Velocity pressure, qp(z) = 0.310 kN/m²

Equivalent wind speed, v= v(qp(x)/0.613) = 22.50 m/s = 50.33 mph

WIND MONITORING

When Anemometers shall be used. All wind speed should be measured in 'clean' air avoiding turbulence and shelter from surrounding features. Ideally this will be achieved by fixing the anemometer in the following manner.

- 1) Fixed to a mast, at least 10m high and minimum of 60m away from all large obstructions trees, etc.
- 2) Fixed to the temporary structure, mounted at a height of at least 14.0m.
- 3) Fixed at least 10m above ground and 2m above any neighbouring structure.

Wind speeds shall be monitored and recorded continuously while people are on or around the structure.

WARNINGS

A Level 1 condition shall exist when wind speeds reach = 15.75 m/s
in conjunction with an increasing general trend of recorded wind speeds.

A Level 2 condition shall exist when wind speeds reach = 20.25 m/s
in conjunction with an increasing general trend of recorded wind speeds.

An audible and /or visual alarm system will be provided to warn of Level 1 and Level 2 wind speeds.

Attainment of level 1 or level 2 requires immediate action as details below.

Date	11/06/2018	 Prime Scaffold and Structural Designs Limited	
Client	Acorn Event structures		
Title	Dreamland Stage		
Site	Unknown		
Prepared By	D.Rogerson		
Checked by	M. Stirk		

ACTIONS

The following actions must be undertaken immediately following a level 1 or level 2 warning .

Level 1 All staff involved with the installation/erection of the structure(s) should be put on alert that action may be required to delay the erection process until safe working conditions have returned. This process should be adopted into the overall site wind management plan.

- Kentledge must be installed to partially installed structure.
- Make preparations for level 2 actions.

Level 2 It is recommended as safe practice for a site safety meeting to be convened to assess the overall site conditions when monitoring registers a gust wind speed in excess of 'Level 2 wind speed' in conjunction with an increasing general trend of recorded high wind speeds. (This can be varied subject to onsite risk assessment.) This should be adopted into the overall event safety plan and preparations should be made regarding show stop procedure and full or partial evacuation of the site should wind speeds increase making site conditions unsafe.

- All Sheeting must be removed
- Site evacuation may have to be implemented
- A safety meeting must be called to identify subsequent action such as the lowering of production
- The structure must immediately become a hard hat area for essential personnel only
- The stage may be evacuated and a safe perimeter imposed around all temporary structures
- Before performances resume, or deconstruction begins, there must be a structural inspection and new sign off.

Reference documents:

Guidance for the Management & Use of Stages and related temporary event structures.
IstructE Temporary demountable structures Guidance on Procurement Design and Use-forth Edition